



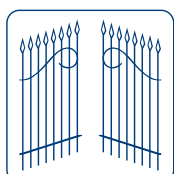
# COMBI 740

## Gate operator "ALL-IN-ONE"

Fully concealed

Underground

Automatic



**FADINI**<sup>®</sup>  
the gate opener  
Made in Italy





**Gate operator “ALL-IN-ONE”  
Fully concealed. Underground  
Automatic**

# COMBI 740



The **COMBI 740** operator for swinging gates is designed for below-ground installation and to be positioned at the foot of the gate, perpendicular to the hinge supporting the gate to be opened.

### Compact design for easy installation

The all-in-one unit incorporating the basic enclosure and the hydraulic jack pump/motor set has been specifically designed for problem-free installation. The mechanism is supplied fully functional and no adjustment or hydraulic oil top-ups are necessary. The enclosure is sunk in concrete next to the pillar, ensuring that the surface edge is perfectly horizontally aligned and on a level with the ground.

**COMBI 740** operators are right- or left-handed and are clearly marked D for right-hand and S for left-hand versions, accordingly.

### Perfection in each and every detail, for total security

To guarantee safety against crushing, the motor pump unit is fitted with pressure valves that are conveniently located for torque adjustments yet protected to prevent tampering.

The two-way hydraulic locking device is built into the valve assembly, works automatically inside the hydraulic circuit to interrupt the oil hydraulic circuit and hold firmly the gate in open and closed positions. The main torque shaft is manufactured using specially treated steel to bear considerable static load, torque and overload (including strain exerted manually) meeting high performance demands.

The oil-hydraulic jack is available with an opening and closing deceleration function on request. On request, it is also possible to order a non-locking operator to allow the application of an electric lock to hold the gate closed. The electric supply cable sealed to the bottom of the oil tank and connected to the electric motor is long-lasting, weather-proof and resists temperature

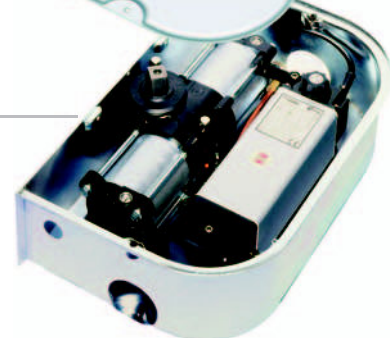
Optional: stainless steel cover



Standard aluminium cover



Enclosure



Emergency locking shoe, released



Equipment in working condition



COMBI 740 on site application. Gate stop in open gate position.





changes, thanks to the special cable sheath that encloses the three power wires and an earth wire, which are all clearly marked.

The entire oil-hydraulic unit is commanded by a dedicated programmer with a highly reliable electronic circuit. In the event of a power cut, manual gate opening is made possible by a mechanical release shoe that can be applied between the jack shaft and foot of the gate and can be activated by a specifically designed spanner.

In addition to the pressure cast aluminium cover, on request a stainless steel cover is available that makes the operator even more elegant and safe over time.

The **COMBI 740** gate operator is built in the Meccanica Fadini factories and is the result of years of research, studies and specific tests to guarantee its quality and reliability over time.

## Accessories



**ELPRO 13 CEI**  
electronic programmer



**EDI 60**  
digital keypad



**PRIT 19**  
keyswitch



**MIRI 4**  
flashing lamp



**BIRIO A8**  
aerial



**POLO 44**  
photocells



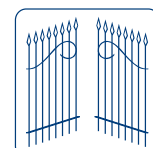
**ASTRO 43/1R**  
radio



**ASTRO 43/2 TR**  
transmitter



Post with photocell for safety  
POLO 44



**FADINI**  
the gate opener  
Made in Italy

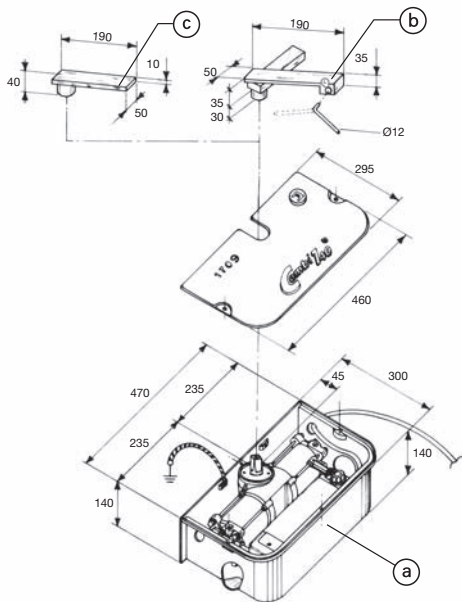
# COMBI 740 Gate operator



Class H, Two-phase, Electric Motor	
Power output	0.18 KW (0.25 HP)
Supply voltage	230 V / 50 Hz
Absorbed power	250 W
Absorbed current	1.2 A
Capacitor	12.5 µF
Motor rotation speed	1'350 rpm
Intermittent service	S3
Double Stroke Jack and Oil-hydraulic Pump	
Pump flow rate-P3	0.85 l/min.
Working pressure	1 MPa (10 bar)
Max. pressure	3 MPa (30 bar)
Working temperature	-20°C +80°C
Rotation time (110°)	23 s
Type of oil	FADINI A 15 by Agip
Shaft rotation angle	110°
Rated torque	235 Nm
Cylinder bore	75 mm
Stroke	52 mm
Weight with accessories	27 Kg
IP Standards	IP 673
Static gate weight	700 Kg
Overall dimensions (LxWxH)	470x300x150 mm
Duty cycle	23 sec. Open - 30 sec. Dwell - 23 sec. Close
Time of one complete cycle	76 s
No. of complete cycles: Open - Dwell- Close	47/hour
No. of cycles a year, 8 hours a day	137'000
Dampening	
Pump flow rate - P3	0.85 l/min.
Rotation time (175°)	28 s

## LEFT-HANDED UNIT - VIEW FROM INSIDE PROPERTY

Suitable for gate width from 2 up to 3.5 m max. with or without locking/dampening depending on gate size and site requirements



- a) The combined motor and jack of the **COMBI 740** employs the latest technology with a quiet-running steel lobe pump at its heart, creating and holding greater pressures for hydraulic locking and drive than most other underground gate operators.
- b) **Gate fixing device** (locking version) is welded or screwed to gate foot. Lock can be released by special key.
- c) **Gate fixing device** (non-locking version) is welded to gate foot.
- d) Fix to the ground proper **gate stops** both in the open and close gate position. See p. 7 in the installation manual.

## PRODUCT FEATURES

- Pre-oiled and pre-set for immediate installation.
- Close proximity of pump and jack gives fast response.
- Close pivot point (45 mm) to gate pier.
- Manual release from inside and outside of property.
- Choice of 110° or 175° rotation angle.
- Braking or non-braking versions available.
- Locking or non-locking versions available.
- Conforming to EN 12445, EN 12453 safety standards.
- All-in-one pump and jack unit, contained in a single enclosure, is sunk into the ground at the foot of the left-hand and right-hand gate to achieve synchronised operation. The unit should be piped into a soak-away to allow for water drainage.

## WARNINGS

- Should the combined unit jack/hydraulic motor pump be removed for maintenance, servicing or repair, disconnect the electric motor cable from the junction box.
- Never cut off the cable from the electric motor.
- Make sure that the oil plug is properly tightened.
- Do not throw away oil from repaired or serviced units, waste oil must be disposed of properly through a specialised company.
- Do not throw away packaging such as cardboard, polystyrene and nylon, which must be disposed of properly through a specialised company.
- The electrical equipment must be properly earthed.



We recommend that installation complies with applicable regulations, the instructions enclosed and EN 12453 and EN 12445 standards in observance of essential EC requisites

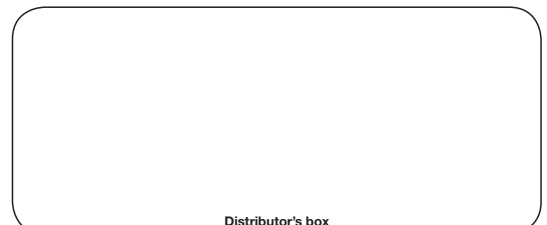


Directive 2003/108/EC  
Disposal of electric and electronic material  
**DO NOT DISPOSE OF AS NORMAL WASTE  
HARMFUL TO THE ENVIRONMENT**



AUTOMATIC GATE MANUFACTURERS

Via Mantova, 177/A - 37053 Cerea (Verona) Italy  
Tel. +39 0442 330422 r.a. - Fax +39 0442 331054  
e-mail: [info@fadini.net](mailto:info@fadini.net) - [www.fadini.net](http://www.fadini.net)



Distributor's box

The manufacturers reserve the right to change the products without any previous notice